

# Chatham-Kent Tomorrow: BE THE CHANGE!

## Census 2006 Highlights for Chatham-Kent and its Communities

Councillor Art Stirling

Ward 2 – South Kent

# Presentation Outline

- 1. Purpose**
- 2. Why Concentrate on the Urban Centres?**
- 3. Chapters of Information:**
  - a. Population
  - b. Income
  - c. Cost of Shelter
  - d. Education
  - e. Employment
  - f. Immigration
- 4. Summary**
- 5. Where do we go from here?**
- 6. Discussion (Q & A)**

# Purpose

**This presentation will provide a snapshot of the 300+ slides that are available on the data CD in your package.**

## **This information will:**

1. Empower community groups, organizations, and businesses within the primary and secondary urban centres in Chatham-Kent to understand and respond to the major economic, environmental, and social challenges facing their community in Chatham-Kent.
2. Be useful for long range planning and data management for the community and municipal strategic planning area, and change management and priority setting processes.
3. Be a corporate resource to support the needs of multiple municipal departments by providing comparative information to help us make improved strategic decisions and resource allocations.

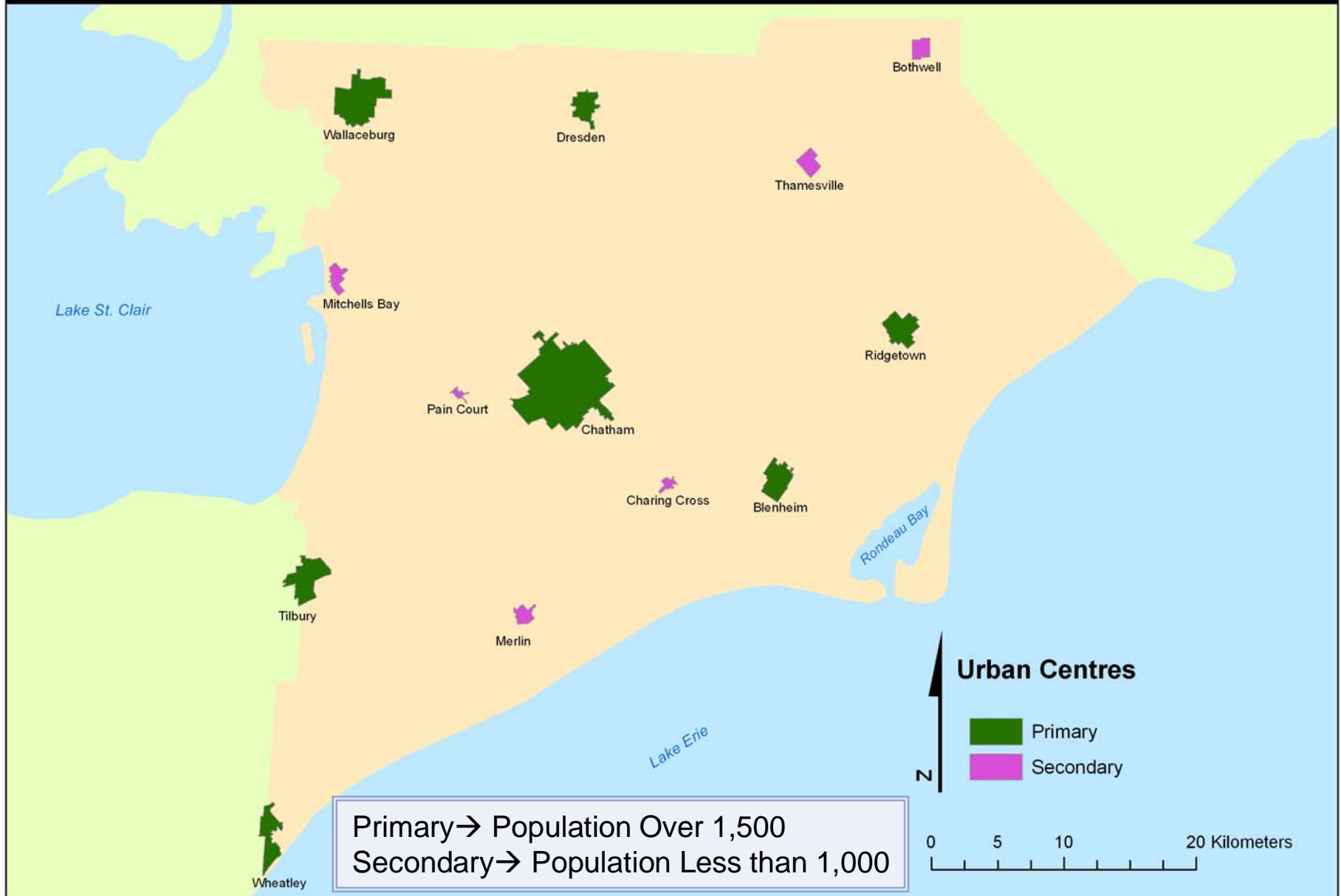
# Why Concentrate on Urban Centres?

*Source: Chatham-Kent Official Plan and Zoning By-Law*

**119 Communities in Chatham-Kent, focus is on the 13 urban centres**

	<b>Seven (7) Primary Urban Centres</b> Dresden, Ridgetown, Blenheim, Tilbury, Wheatley, Wallaceburg, Chatham	<b>Six (6) Secondary Urban Centres</b> Mitchell's Bay, Bothwell, Merlin, Thamesville, Charing Cross, Pain Court	<b>Five (5) Hamlets</b> Erieau, Morpeth, Highgate, Shrewsbury, Cedar Springs	<b>101 Rural Settlement Areas</b>
<b>Future Development</b>	Major growth by expansion and Infilling	Major growth by expansion and Infilling	Infilling	Minor infilling
<b>Services</b>	Municipal piped water and sanitary sewage system	Municipal piped water and sanitary sewage system in use or planned	Municipal piped water and private sewage disposal	Private water supply and private sewage disposal
<b>Population</b>	> 1,500	<1,000	<500	<200

# Urban Centres of Chatham-Kent



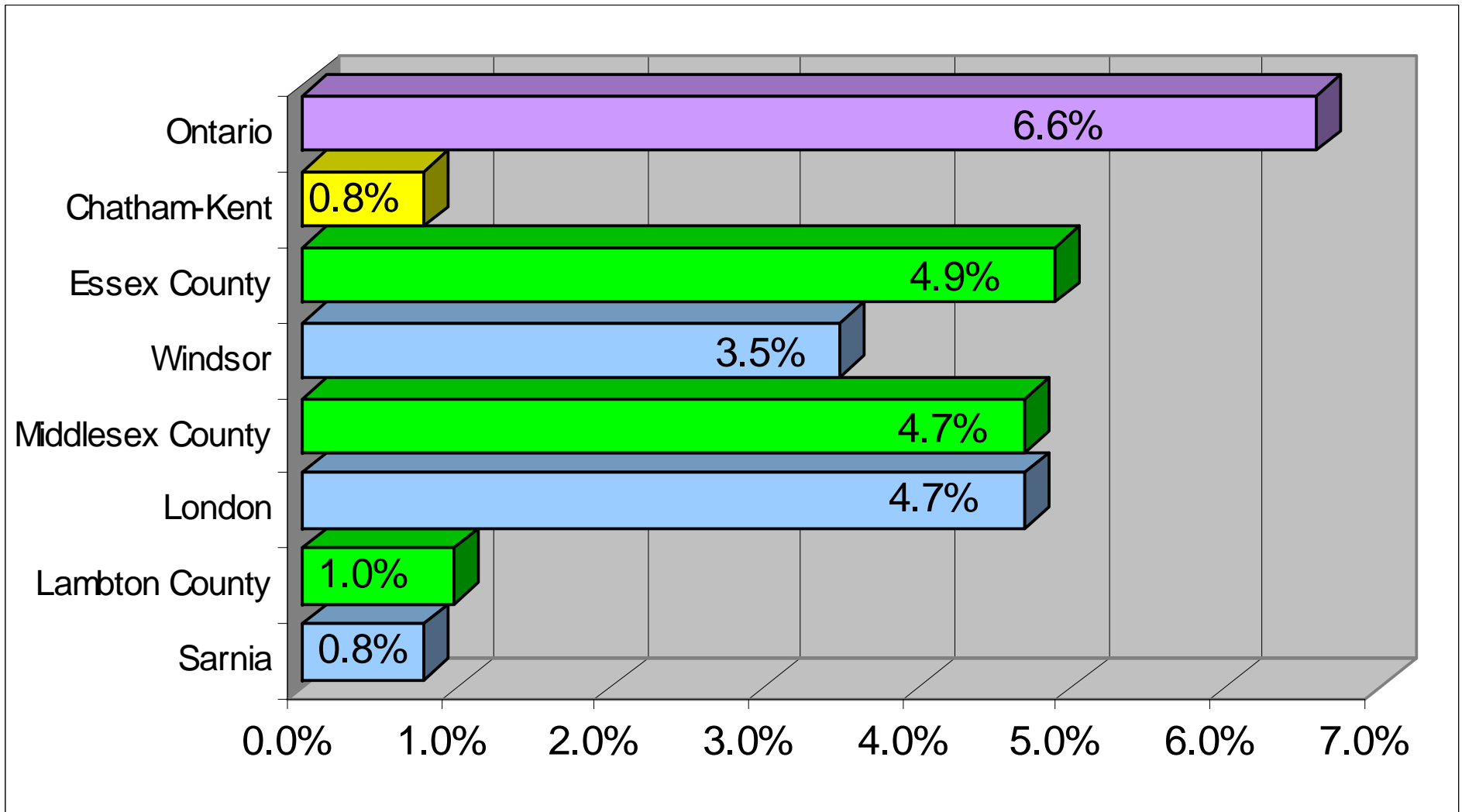
# A. Population Information

Chatham-Kent compared to surrounding regions  
(Middlesex, Essex, Lambton, London, Windsor, Sarnia) & Ontario average

	2001 Census	2006 Census
Population Change	-1.8% decline (1996-2001)	0.8% low end of growth (2001-2006)

# Population Increase from 2001-2006

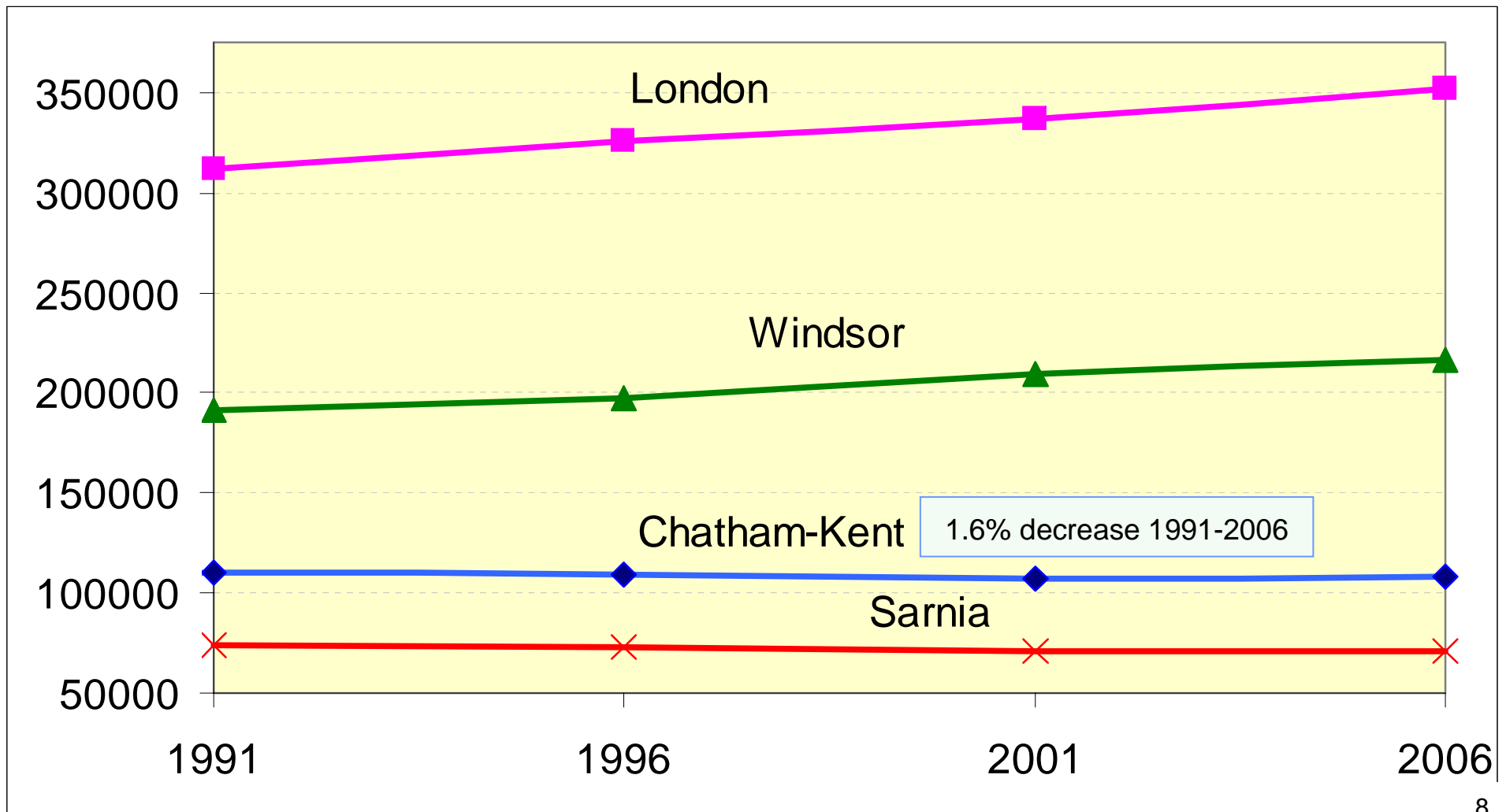
*Source: Statistics Canada Census of Population, 2006 100% profile, Census Subdivision data*



Though Chatham-Kent's population has increased since 2001, many surrounding cities and counties have had their population increase even more.

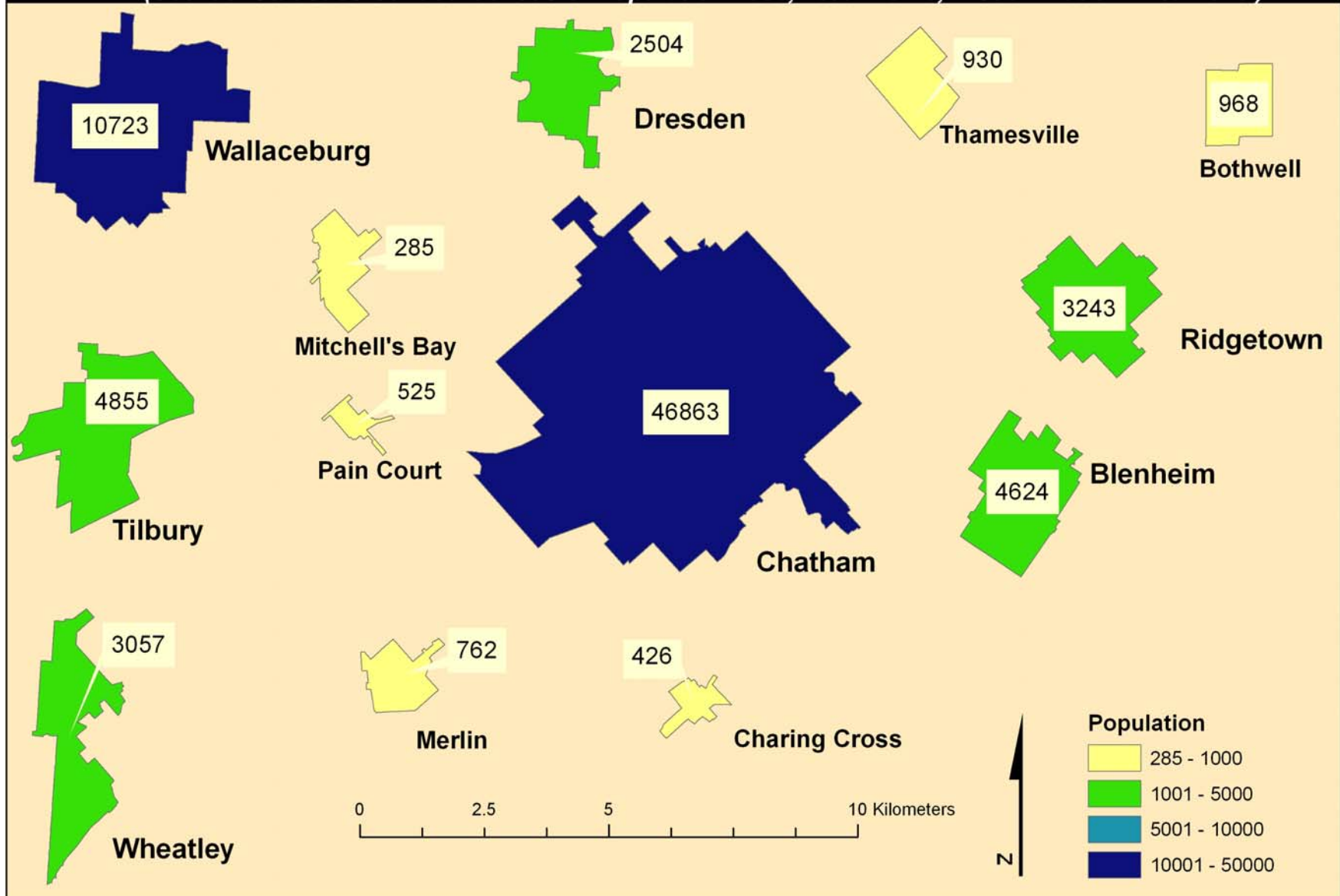
# Population Change from 1991-2006 Chatham-Kent and Surrounding Cities

*Source: Statistics Canada Census of Population, 2001, 2006 100% profile, Census Subdivision data*



# Population of Primary and Secondary Urban Centres of Chatham-Kent, 2006

(Source: Statistics Canada Census of Population 2006, 20% Profile, Dissemination Area Level)

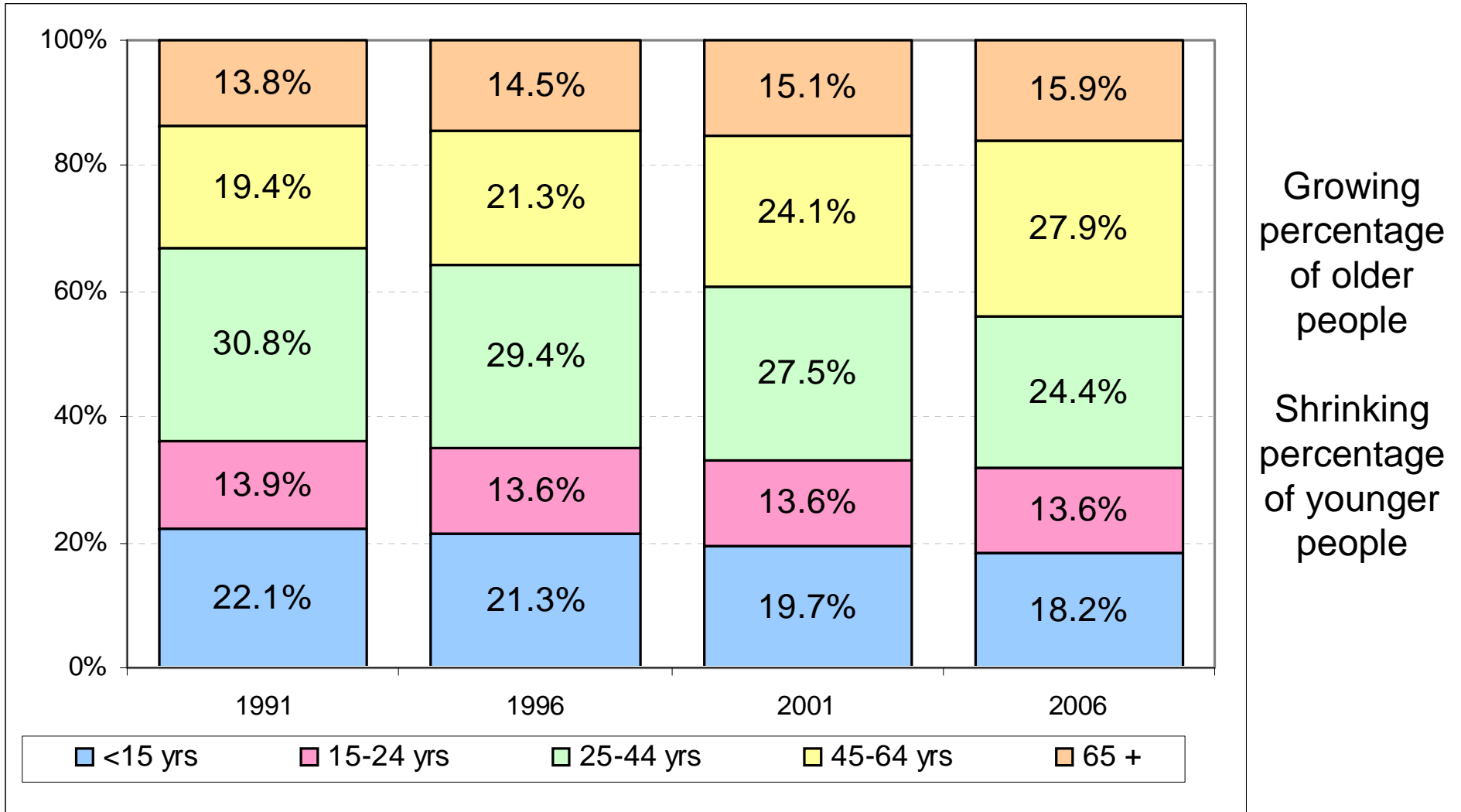


Total Chatham-Kent population: 74% Urban Centres, 26% Rural area 9

# Population by Age Group

## Municipality of Chatham-Kent (1991-2006)

*Source: Statistics Canada Census of Population, 2001, 2006 100% profile, Census Subdivision data*



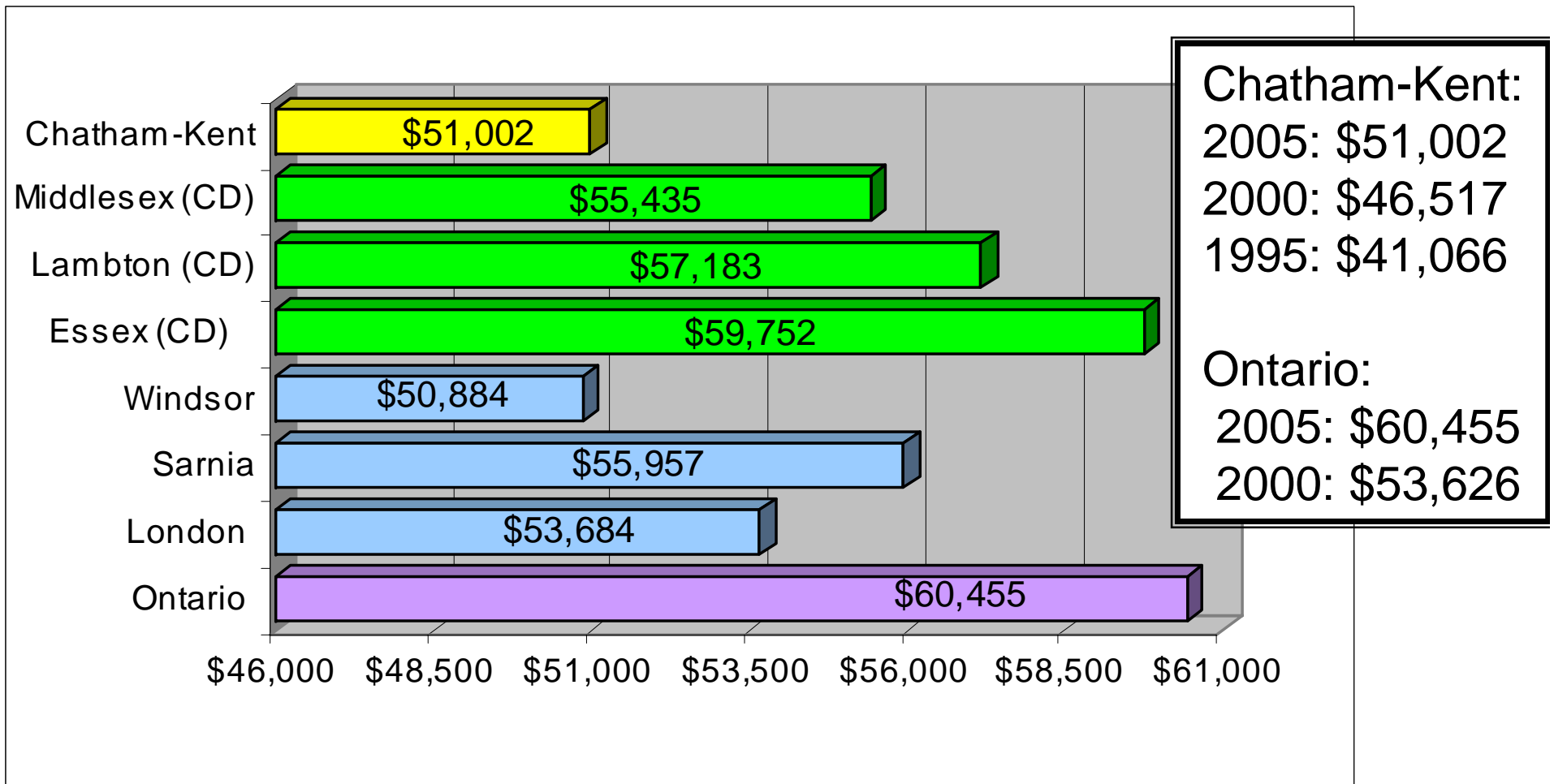
## B. Income

Chatham-Kent compared to surrounding regions  
(Middlesex, Essex, Lambton, London, Windsor, Sarnia) & Ontario average

	2001 Census	2006 Census
Median Household Income	Lowest	Lower end
	Relatively Constant 1990-2005	

# Median Household Income, 2005 Comparison

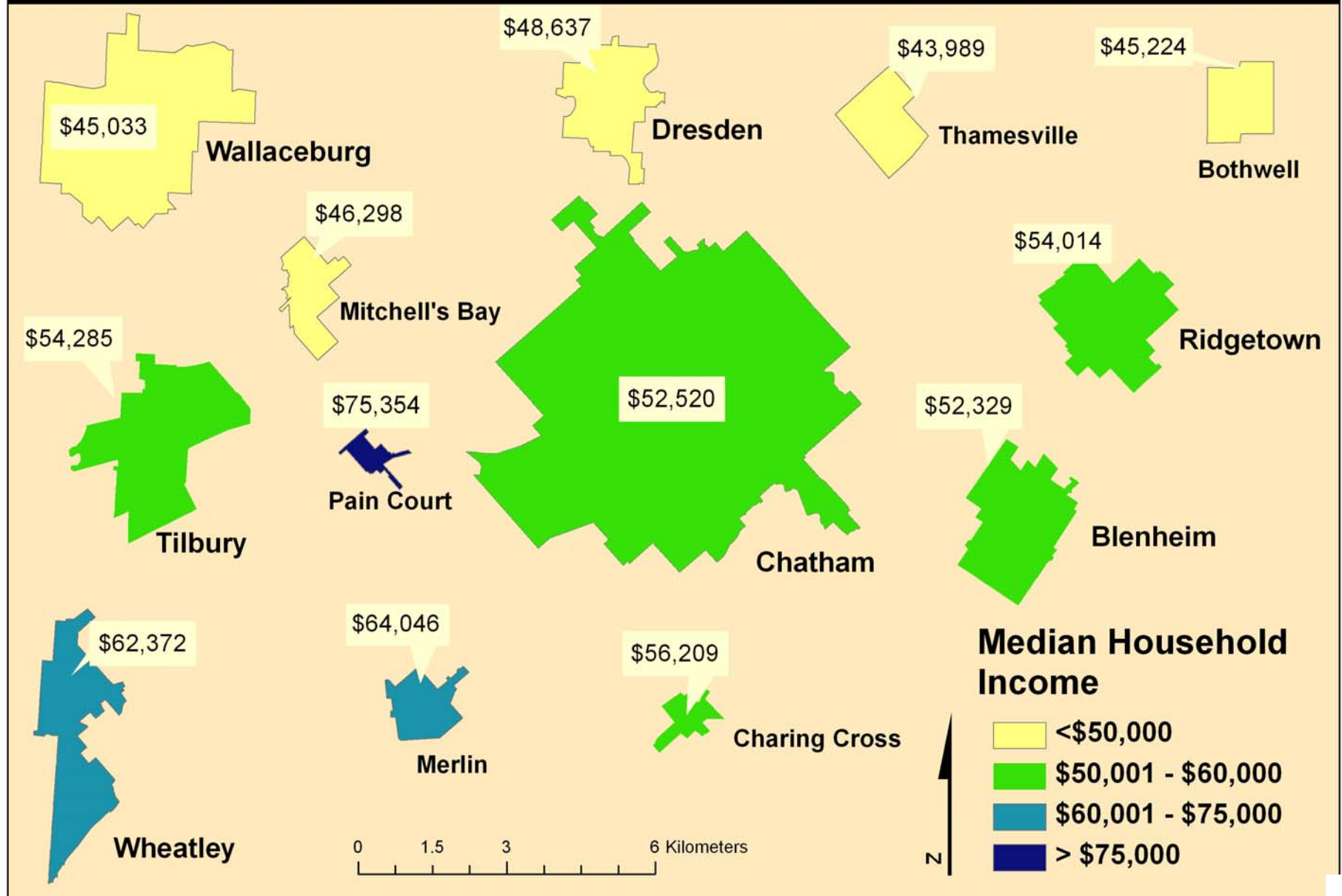
*Source: Statistics Canada Census of Population, 2006 20% profile, Census Subdivision data*



Chatham-Kent has the second lowest median household income in the region.

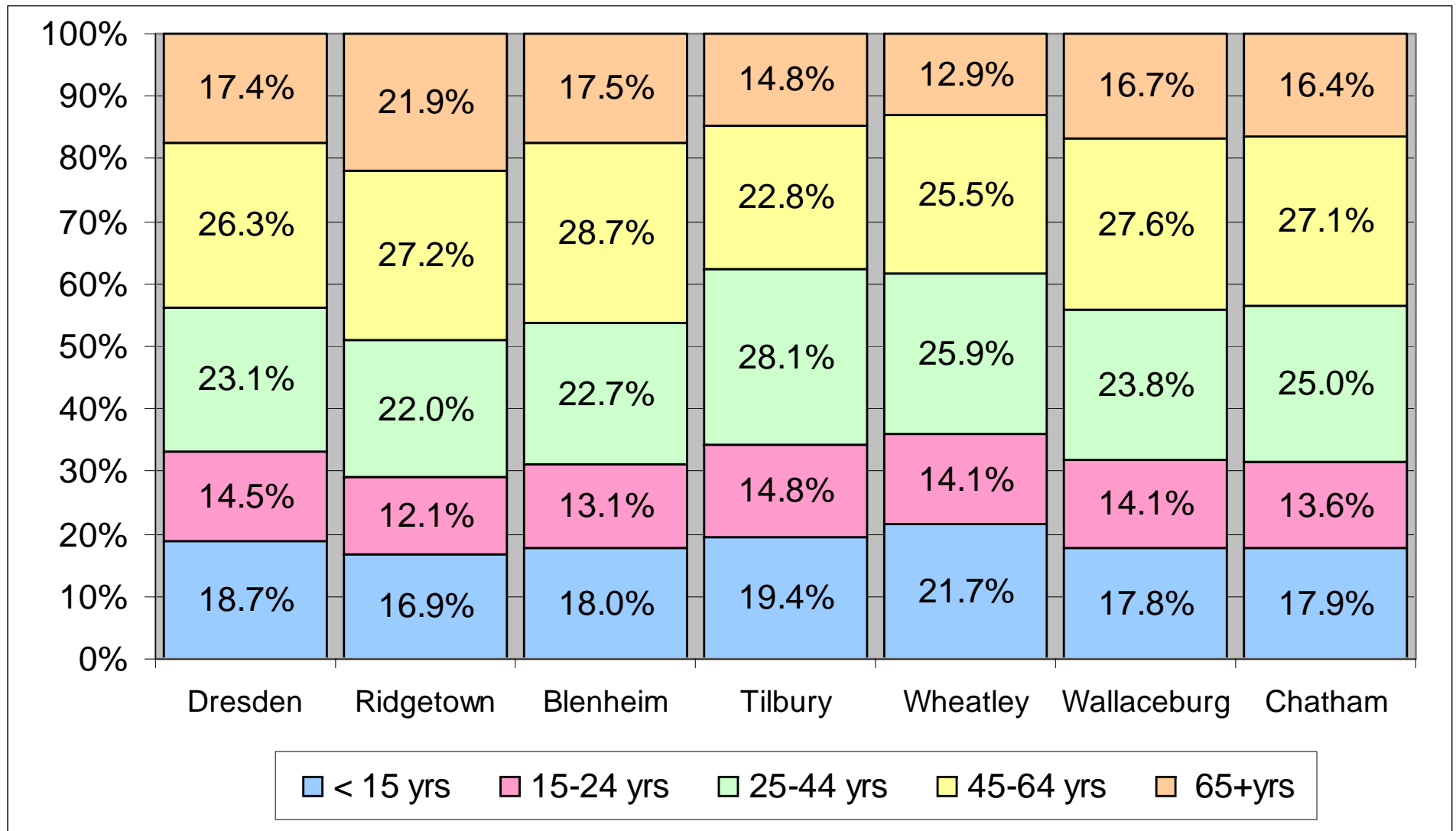
# Median Household Income, 2005

(Source: Statistics Canada Census of Population 2006, 20% Profile, Dissemination Area Level)



# Population by Age Groups for Primary Urban Centres of Chatham-Kent, 2006

*Source: Statistics Canada Census of Population, 2006 100% profile, Dissemination Area data*



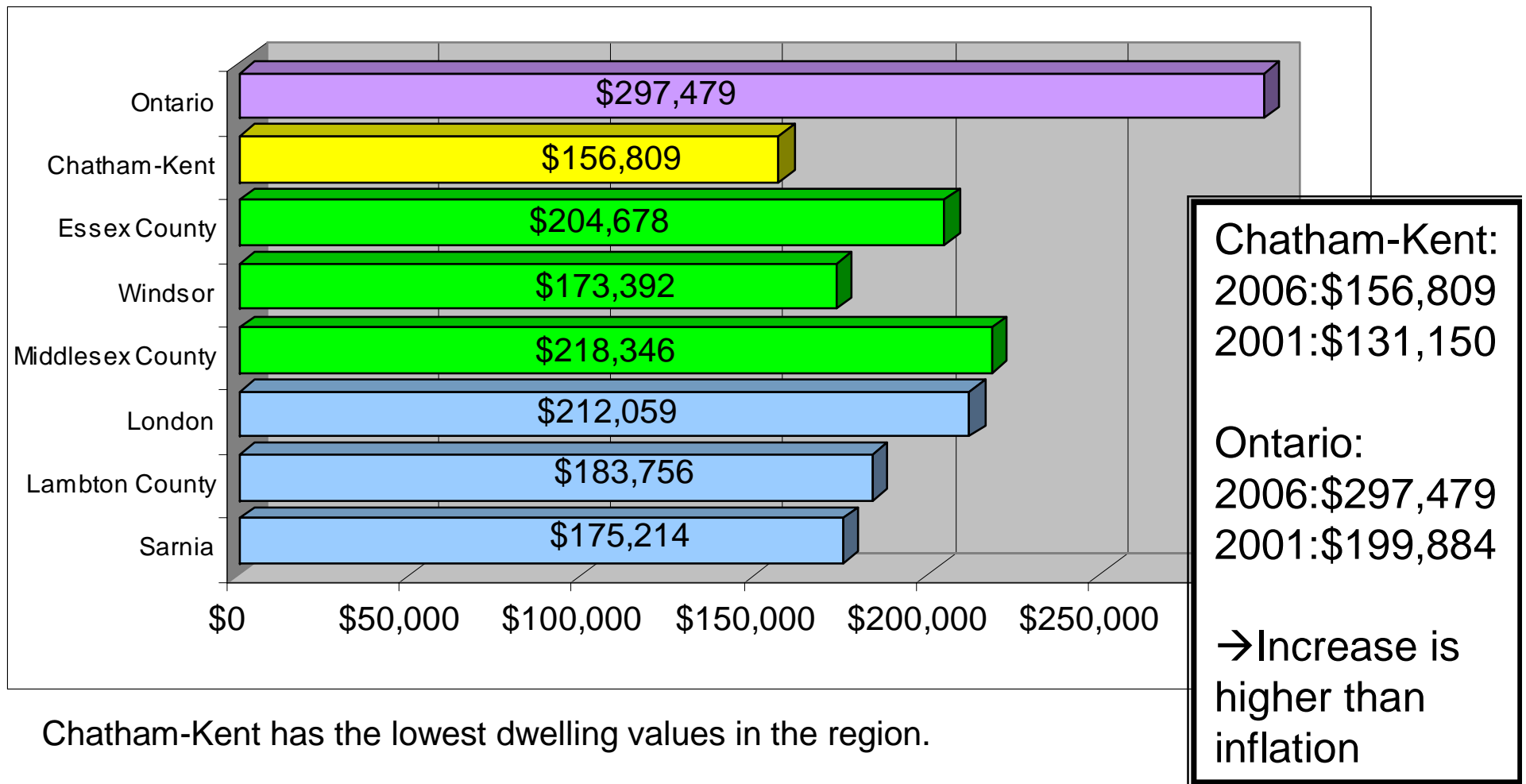
## C. Cost of Shelter Information

Chatham-Kent compared to surrounding regions  
(Middlesex, Essex, Lambton, London, Windsor, Sarnia) & Ontario average

	2001 Census	2006 Census
Cost of Shelter	Lowest	Lowest
	2001-2006: Increase in dwelling values	

# Average Value of Owned Dwellings \$ Comparison, 2006

*Source: Statistics Canada Census of Population, 2006 20% profile, Census Subdivision data*



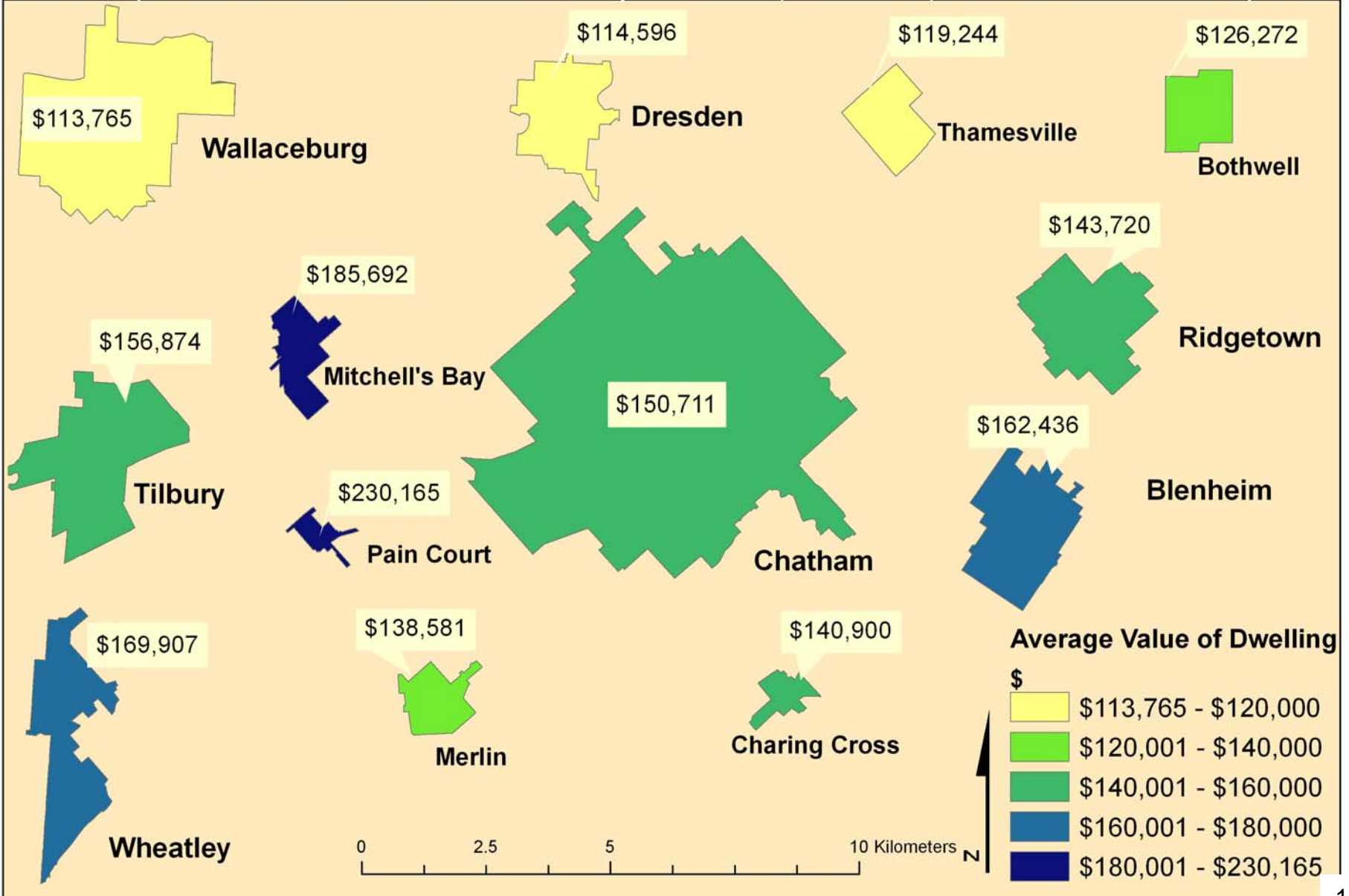
Chatham-Kent has the lowest dwelling values in the region.

*\*Consistent with recent BMA study*

# Average Value of Owned Dwellings (\$), 2006

## Urban Centres of Chatham-Kent

(Source: Statistics Canada Census of Population 2006, 20% Profile, Dissemination Area Level)



## D. Education Information

Chatham-Kent compared to surrounding regions  
(Middlesex, Essex, Lambton, London, Windsor, Sarnia) & Ontario average

	2001 Census	2006 Census
Highest Education Level	Lowest percent of university graduates	Lowest percent of university graduates
	Slight increase, 2001-2006	

# Highest Education Level Achieved (%) for Population Over 25 Comparison, 2006

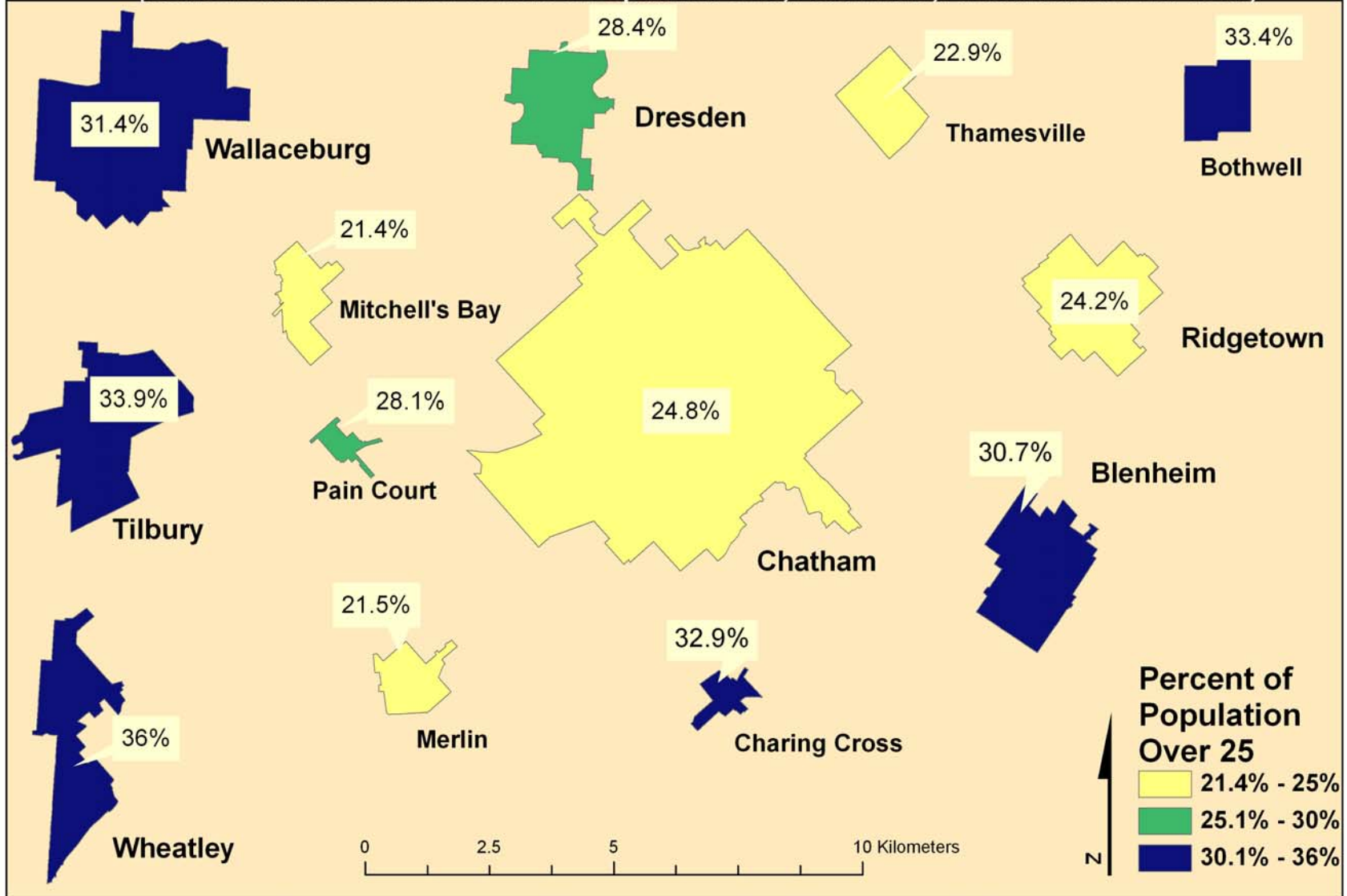
*Source: Statistics Canada Census of Population, 2006 20% profile, Census Subdivision data*

	Total Population Over 25	Less than High School Completion	High School Diploma	Trade or Apprenticeship	College	University Degree	University Certificate Below Bachelors	Post-Secondary (Total)
Ontario	8,194,585	18.7%	24.4%	9.1%	20.1%	23.1%	4.5%	56.8%
Chatham-Kent	72,315	<b>27.4%</b>	27.6%	10.0%	22.5%	<b>9.9%</b>	2.5%	<b>44.9%</b>
Middlesex (CD)	281,270	17.4%	25.6%	9.1%	23.1%	21.3%	3.4%	57.0%
Lambton (CD)	87,525	18.9%	27.1%	14.2%	24.9%	12.0%	2.8%	54.0%
Essex (CD)	261,215	21.0%	27.9%	9.6%	19.8%	18.3%	3.4%	51.0%
London	235,560	16.7%	25.6%	8.7%	22.5%	23.0%	3.6%	57.7%
Sarnia	49,070	17.1%	27.5%	13.6%	24.7%	14.1%	2.9%	55.4%
Windsor	145,445	20.3%	28.2%	8.9%	18.7%	20.2%	3.6%	51.5%

In comparison to surrounding counties and cities, Chatham-Kent has *highest* proportion with **less than high school completion** and *lowest* proportion of **university graduates** and **post-secondary** achievement.

# Percent Population over 25 with Less than High School Completion, 2006

(Source: Statistics Canada Census of Population 2006, 20% Profile, Dissemination Area Level)

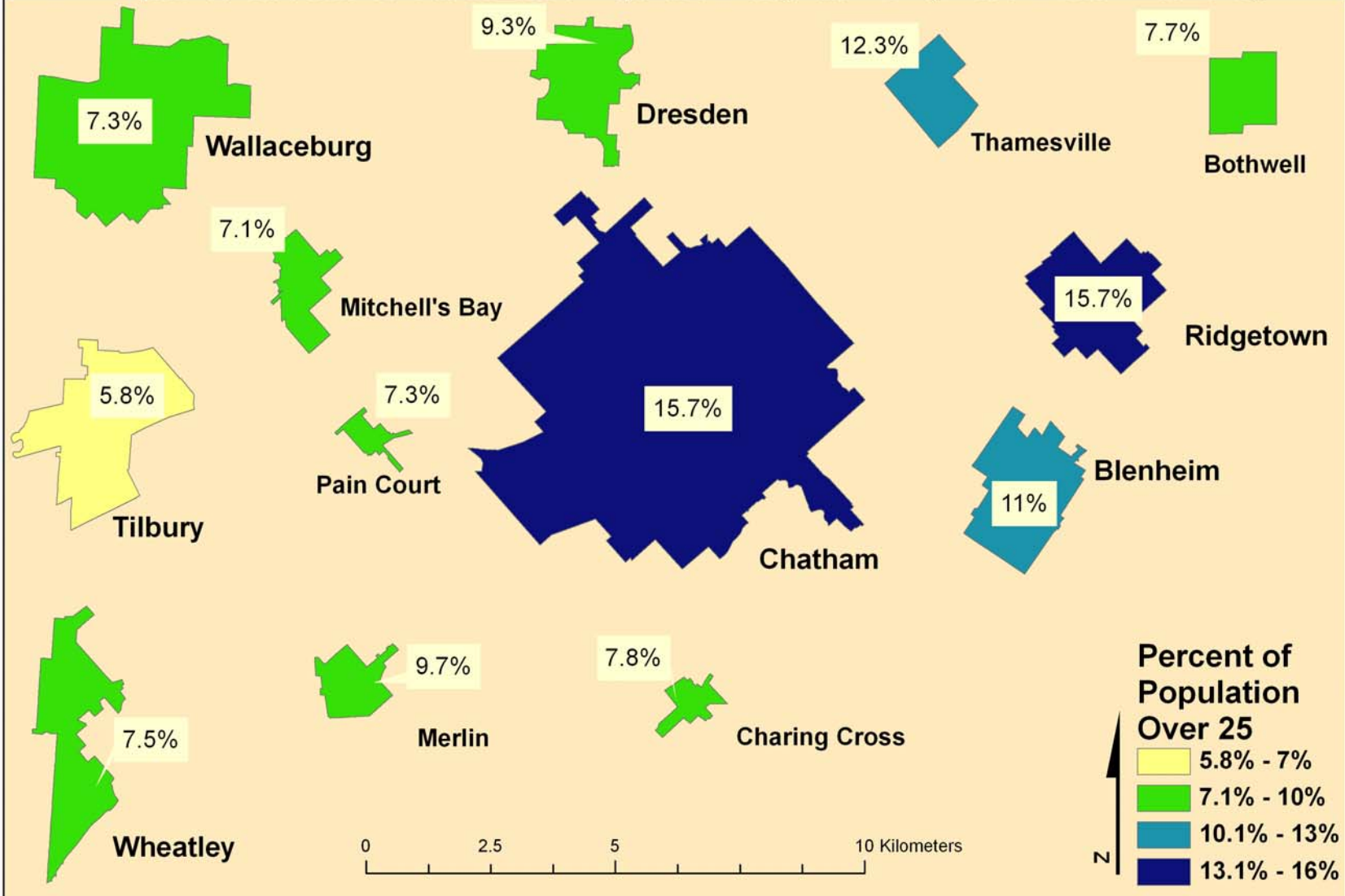


Chatham-Kent: 27.4%

Ontario: 18.7%

# Percent Population over 25 with a University Certificate, Diploma, or Degree, 2006

(Source: Statistics Canada Census of Population 2006, 20% Profile, Dissemination Area Level)



Chatham-Kent: 12.5%

Ontario: 27.6%

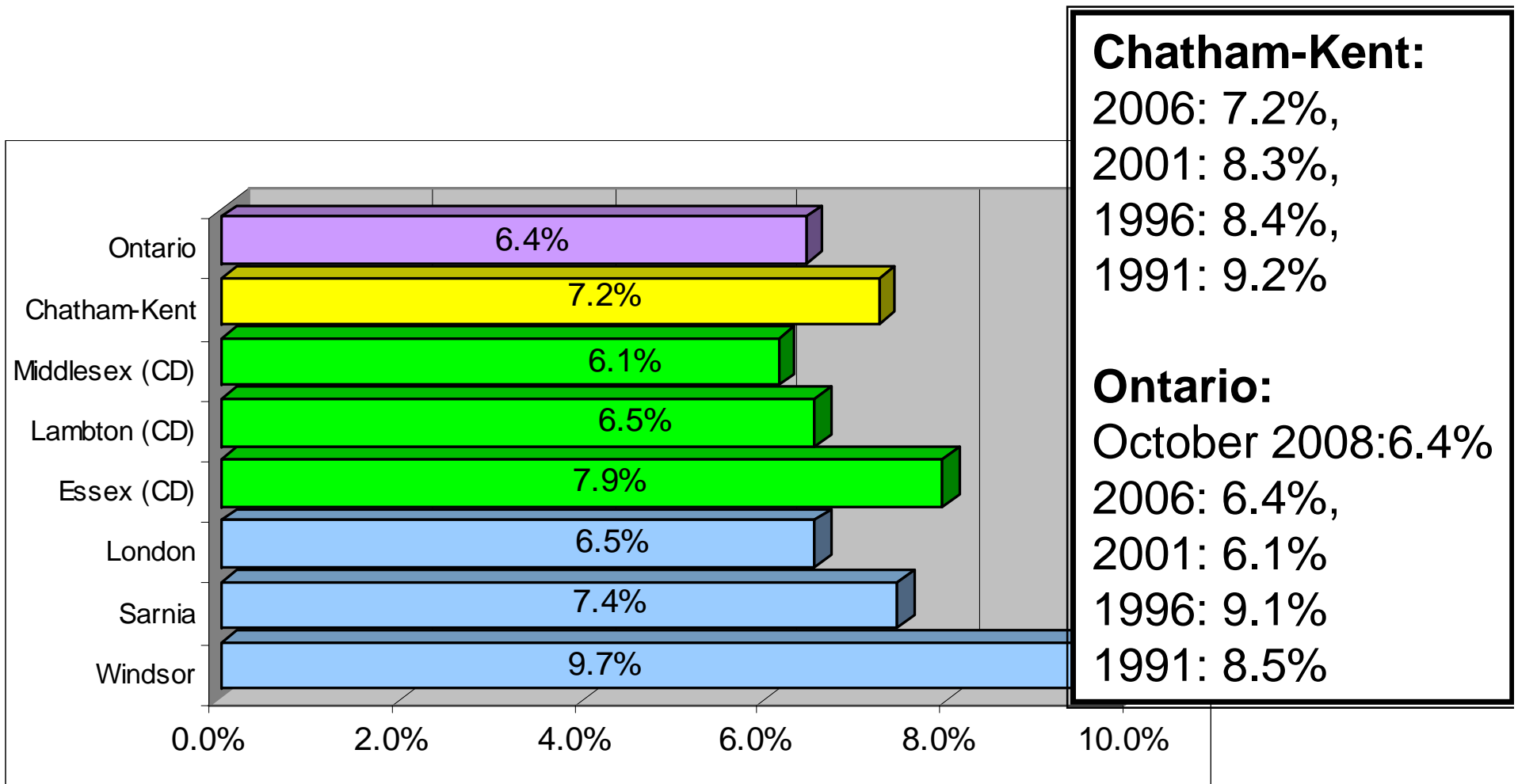
# E. Employment Information

Chatham-Kent compared to surrounding regions  
(Middlesex, Essex, Lambton, London, Windsor, Sarnia) & Ontario average

	2001 Census	2006 Census
Unemployment Rate	Highest	Middle
	Decreased 2001-2006	

# Unemployment Rate (%) for Population Over 15, Comparison, 2006

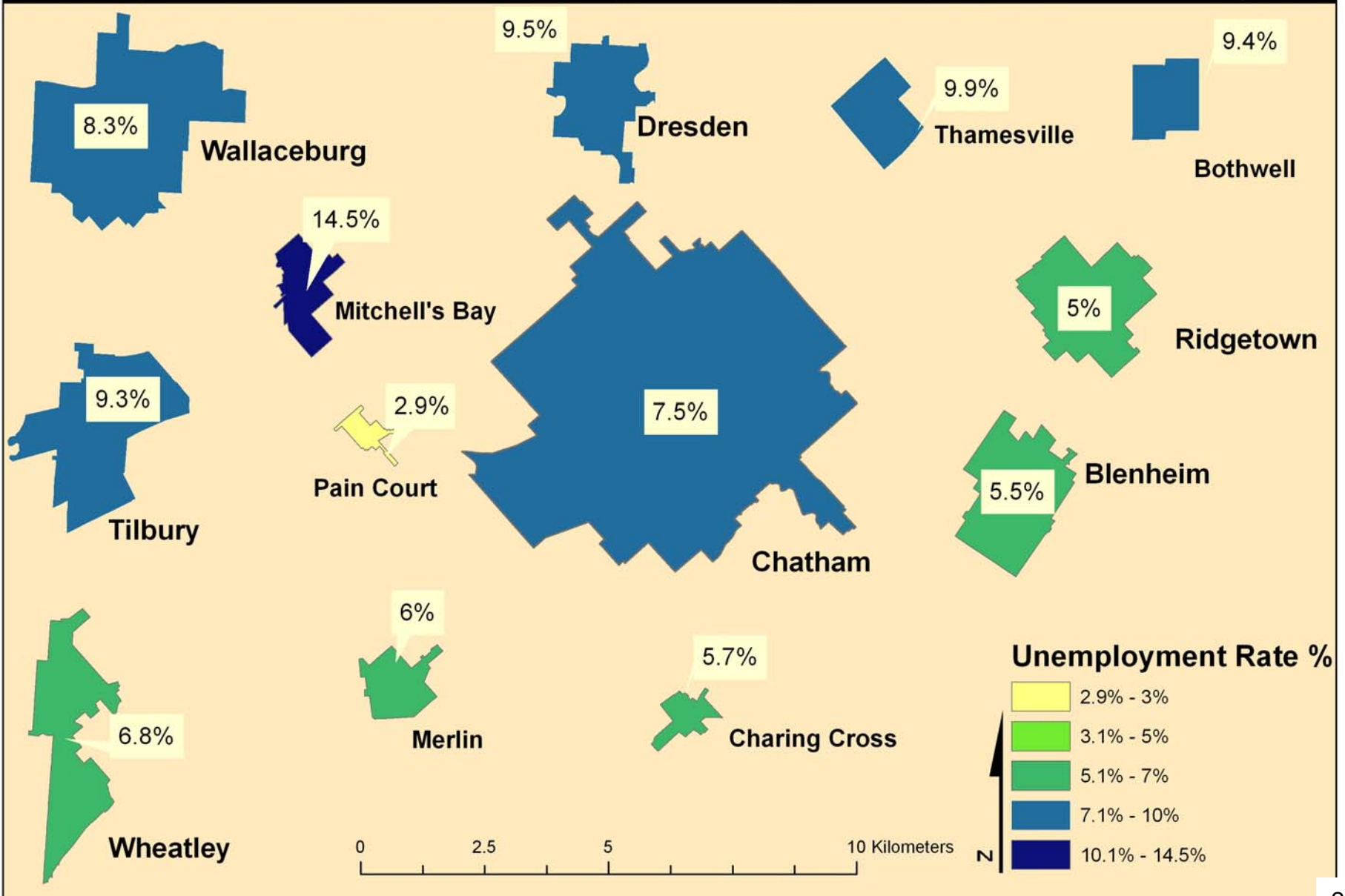
*Source: Statistics Canada Census of Population, 2006 20% profile, Census Subdivision data*



Chatham-Kent's unemployment rate was average for the region in 2006.

# Unemployment Rate % for Population over 15, 2006

(Source: Statistics Canada Census of Population 2006, 20% Profile, Dissemination Area Level)



# Skilled vs. Unskilled Workers in Chatham-Kent and Ontario, 2001 and 2006

*Source: Statistics Canada Census of Population, 2006 20% profile, Census Subdivision data*

Chatham-Kent	Skilled	Unskilled	Not Applicable
2001	46.7%	52.0%	1.4%
2006	43.8%	55.0%	1.2%
Difference	-2.9%, -845 Jobs	+3.0%, +2,630 Jobs	-0.2%

Skilled jobs are defined as jobs requiring either university, college or trade/apprenticeship education.

Ontario	Skilled	Unskilled	Not Applicable
2006	53.2%	45.1%	1.7%

The proportion of skilled jobs in Chatham-Kent is about 10% less than the Ontario average.

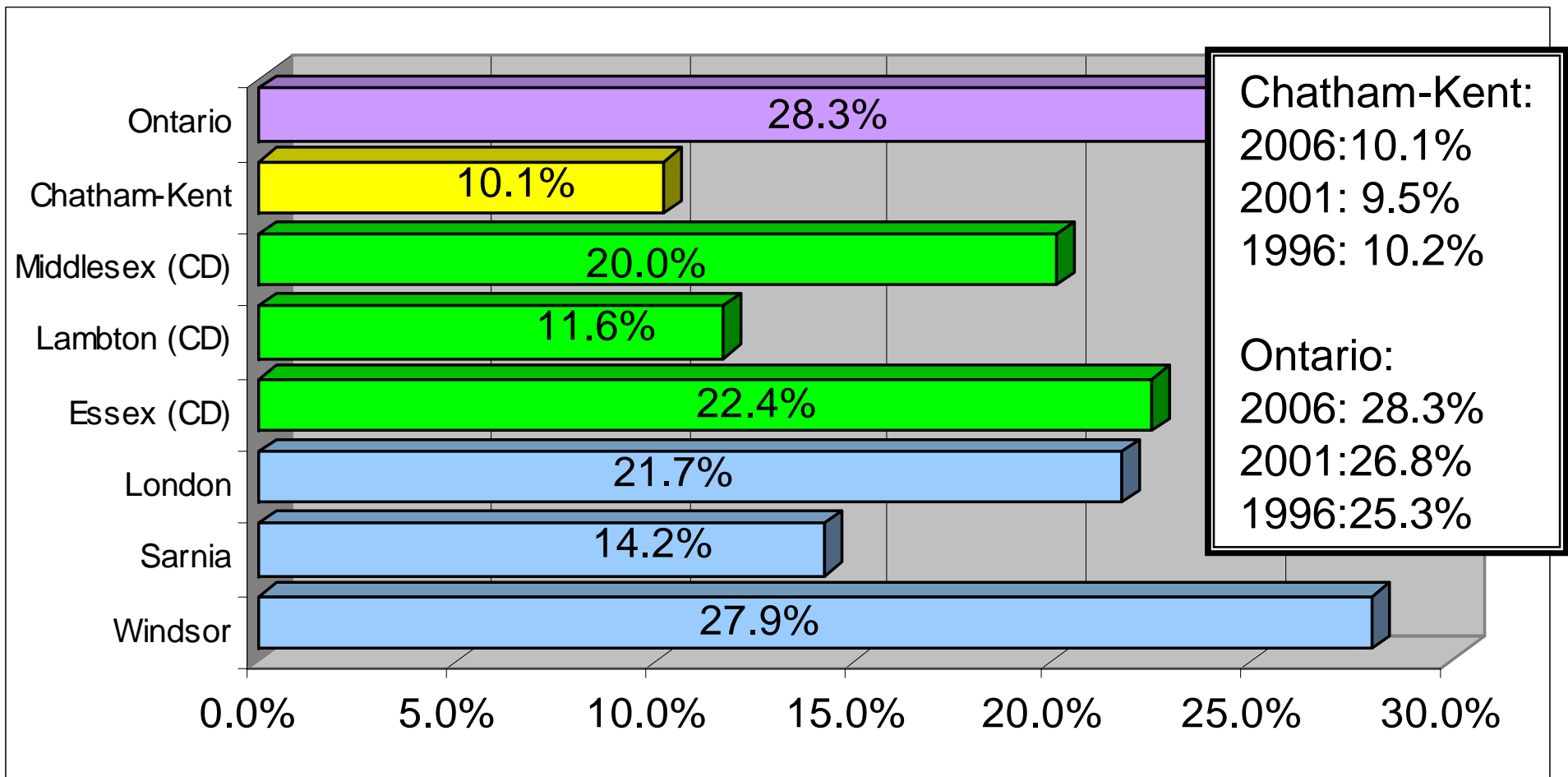
# F. Immigration Information

Chatham-Kent compared to surrounding regions  
(Middlesex, Essex, Lambton, London, Windsor, Sarnia) & Ontario average

	2001 Census	2006 Census
Immigration	Lowest percent of immigrants	Lowest percent of immigrants
	Slight increase 2001-2006	

# % Immigrant Population Comparison, 2006

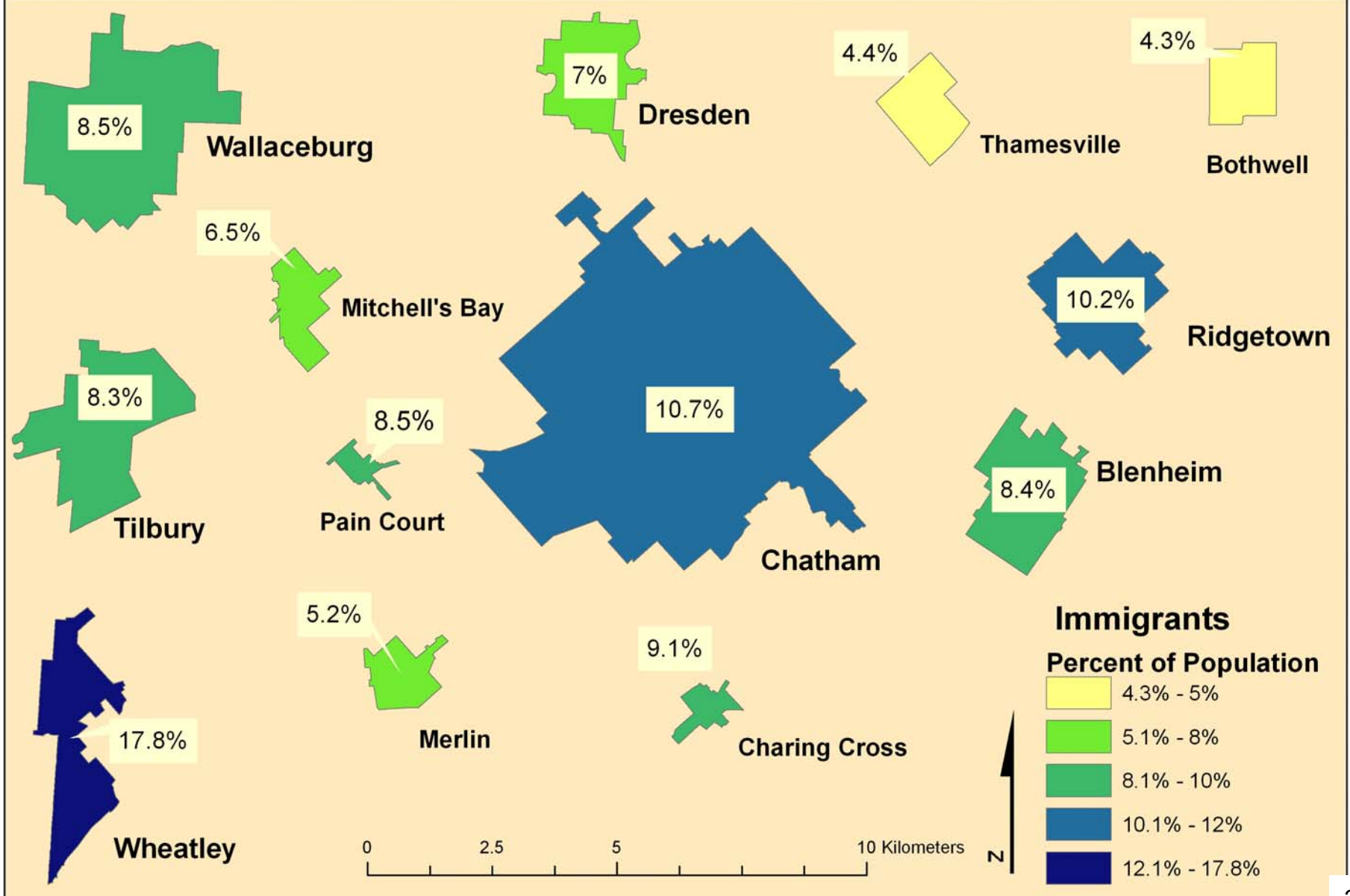
*Source: Statistics Canada Census of Population, 2006 20% profile, Census Subdivision data*



In comparison to surrounding counties and cities, Chatham-Kent has the lowest percent of immigrants. There were *1025 new immigrants (2001-2006)*.

# Percentage of Immigrants by Urban Centre, 2006

(Source: Statistics Canada Census of Population 2006, 20% Profile, Dissemination Area Level)



# Summary

Areas of Concern in Chatham-Kent	Positives to Pull from this Information
Lowest population growth in the region	Slow growth=Sustainability. Sustainable change is possible because we have time to adapt
Low end of median household income in the region	Despite lower incomes, living in Chatham-Kent is affordable.
Lowest postsecondary achievement in the region	Increase in percent of university graduates 2001-2006.
Skilled jobs declined 2001-2006	Unemployment rate decreased 2001-2006
Lowest percent immigrant population in the region	Proportion of immigrants increased 2001-2006

# Where do we go from here?

- There are many ways to capture what is going on in the community \**See Conference Backgrounder (quick facts about CK) and data CD in your package.*
- We can identify our strengths and weaknesses
- Recognize that Chatham-Kent is diverse
- But it is up to you, the community, to take action as a whole to move forward

# Discussion

