



MUNICIPALITY OF
CHATHAM-KENT

MUNICIPALITY OF CHATHAM – KENT

Contract No. T09-152
RECONSTRUCTION OF
SNYE ROAD BRIDGE
OVER McDONALD TAP DRAIN
(TMS No. 4715033N17384044E)



*Tuesday, May 19, 2009
6:00 p.m. – 8:00 p.m.*

PUBLIC INFORMATION MEETING

WELCOME



PROJECT DESCRIPTION

- In 2001, the Municipality of Chatham-Kent initiated a Bridge and Culvert Study. The study has allowed development of a multi-year program for structures requiring replacement, rehabilitation or pre-emptive works to deal with both safety critical and lifecycle issues.
- The bridge on Snye Road over the McDonald Tap Drain (TMS No. 4715033N17384044E), originally constructed in 1950, was identified as having major deficiencies warranting complete reconstruction to ensure continued safe use by motoring public.

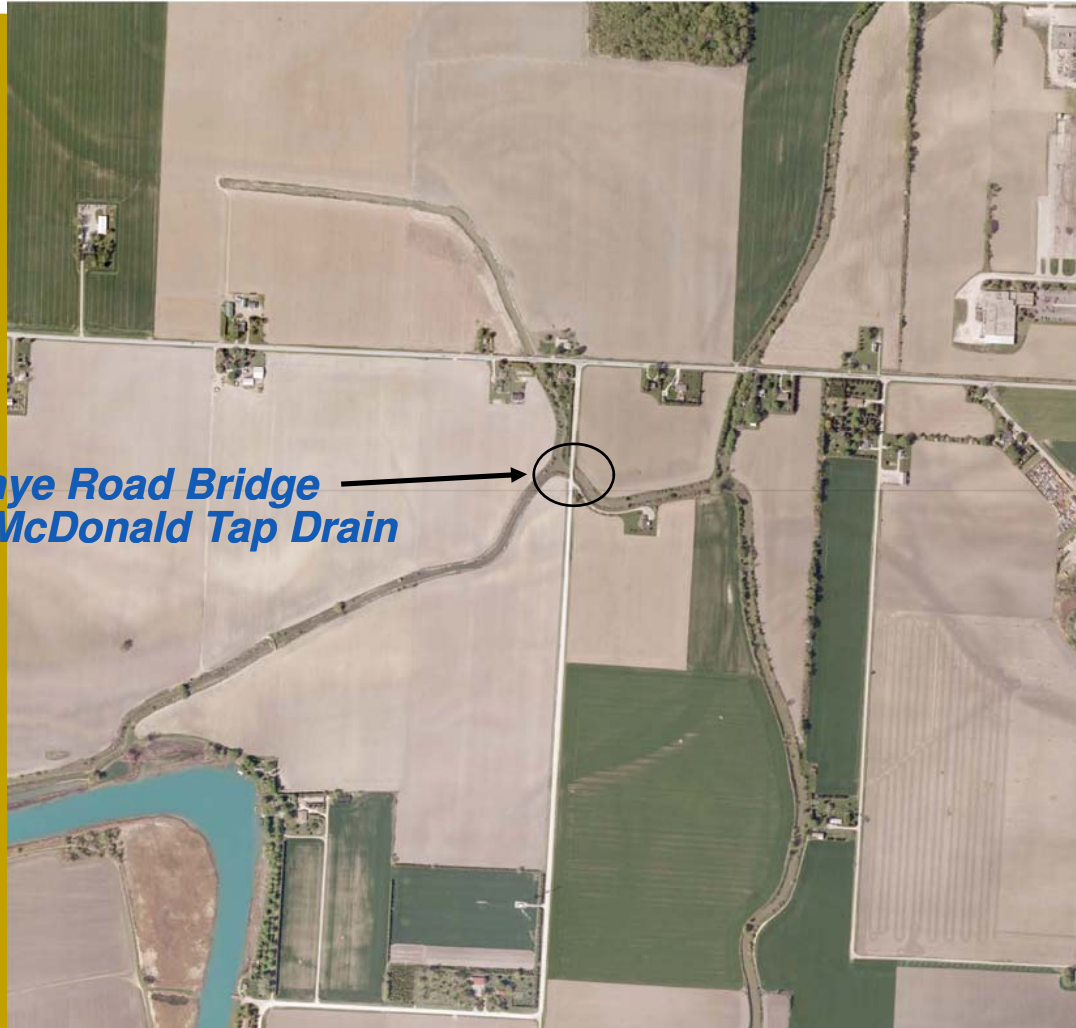
RECONSTRUCTION OF SNYE ROAD BRIDGE
OVER McDONALD TAP DRAIN



MUNICIPALITY OF
CHATHAM-KENT



*Snye Road Bridge
over McDonald Tap Drain*





EXISTING CONDITION

- Concrete-on-steel beam culvert has reached the end of its service life
- Currently there is a triple load posting of 11/19/26 tonnes
- Steel beams supporting the deck have severely corroded
- Soffit of the structure is moderately delaminated



RECONSTRUCTION OF SNYE ROAD BRIDGE
OVER McDONALD TAP DRAIN



MUNICIPALITY OF
CHATHAM-KENT



East Elevation



MUNICIPALITY OF
CHATHAM-KENT



West Elevation



MUNICIPALITY OF
CHATHAM-KENT



Soffit Deterioration



MUNICIPALITY OF
CHATHAM-KENT



Delamination Underside
of Deck



MUNICIPALITY OF
CHATHAM-KENT



Geotechnical Investigation



MUNICIPALITY OF
CHATHAM-KENT



Hydro Utilities



MUNICIPALITY OF
CHATHAM-KENT



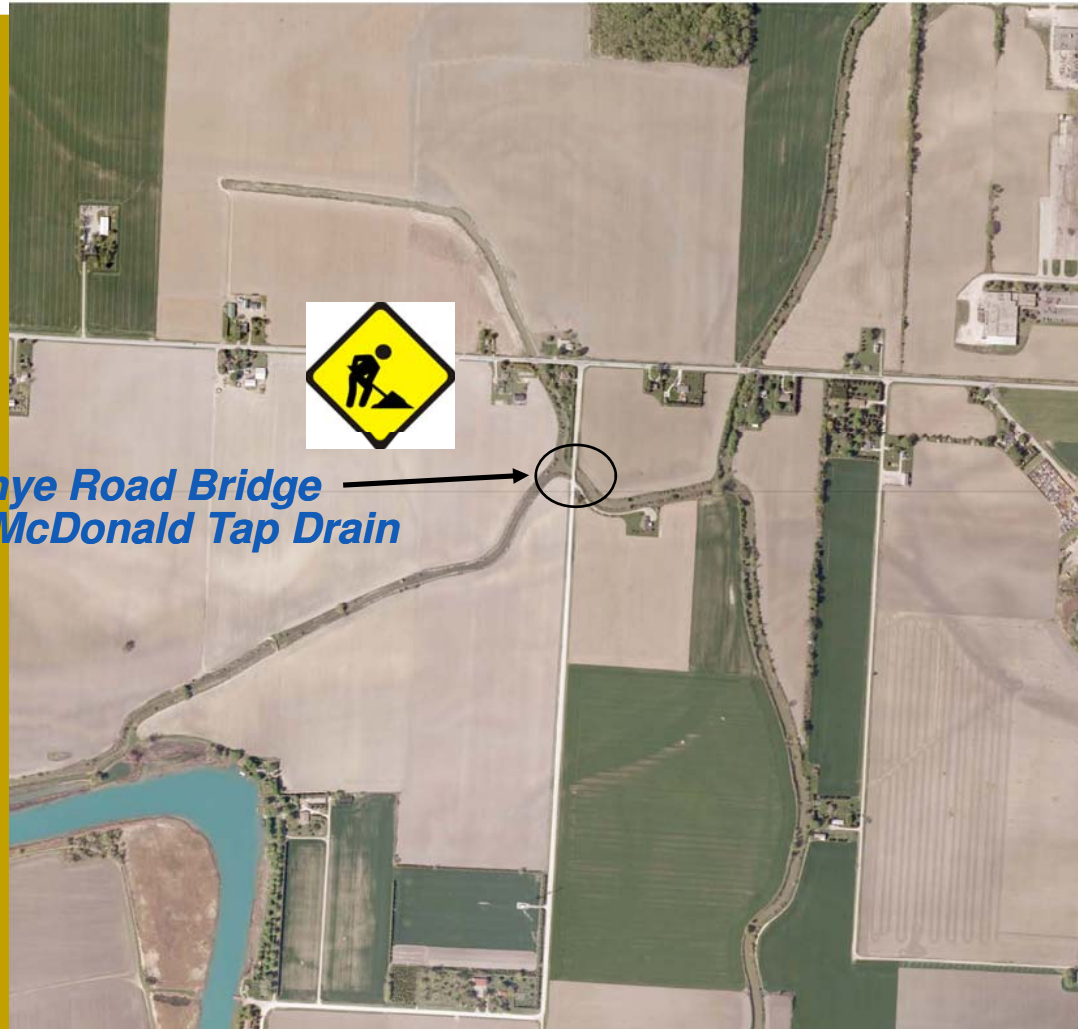
Property Line



West Property Line



MUNICIPALITY OF
CHATHAM-KENT



*Snye Road Bridge
over McDonald Tap Drain*



MUNICIPALITY OF
CHATHAM-KENT

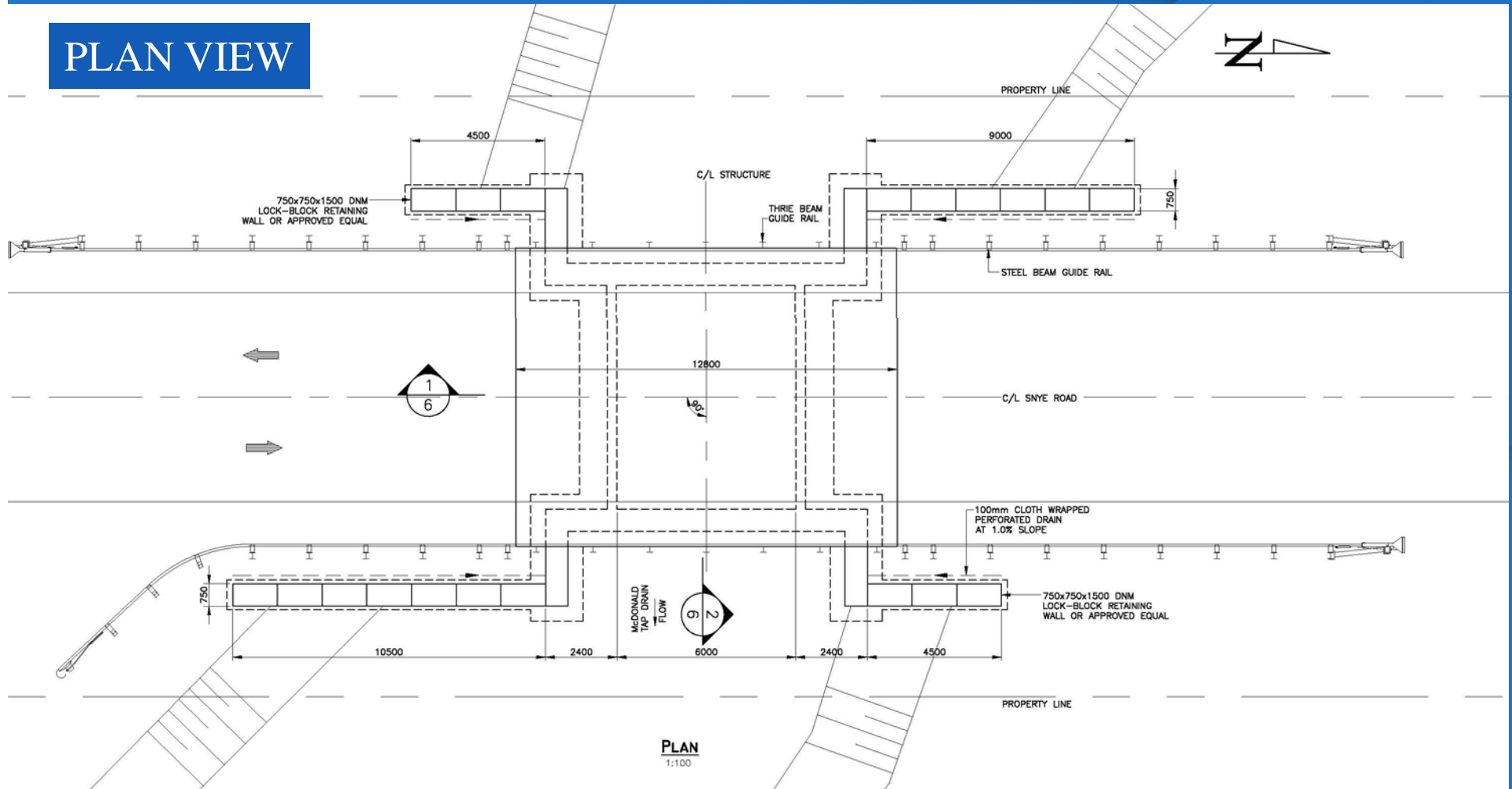


PROPOSED REPLACEMENT STRUCTURE

RECONSTRUCTION OF SNEYE ROAD BRIDGE
OVER McDONALD TAP DRAIN

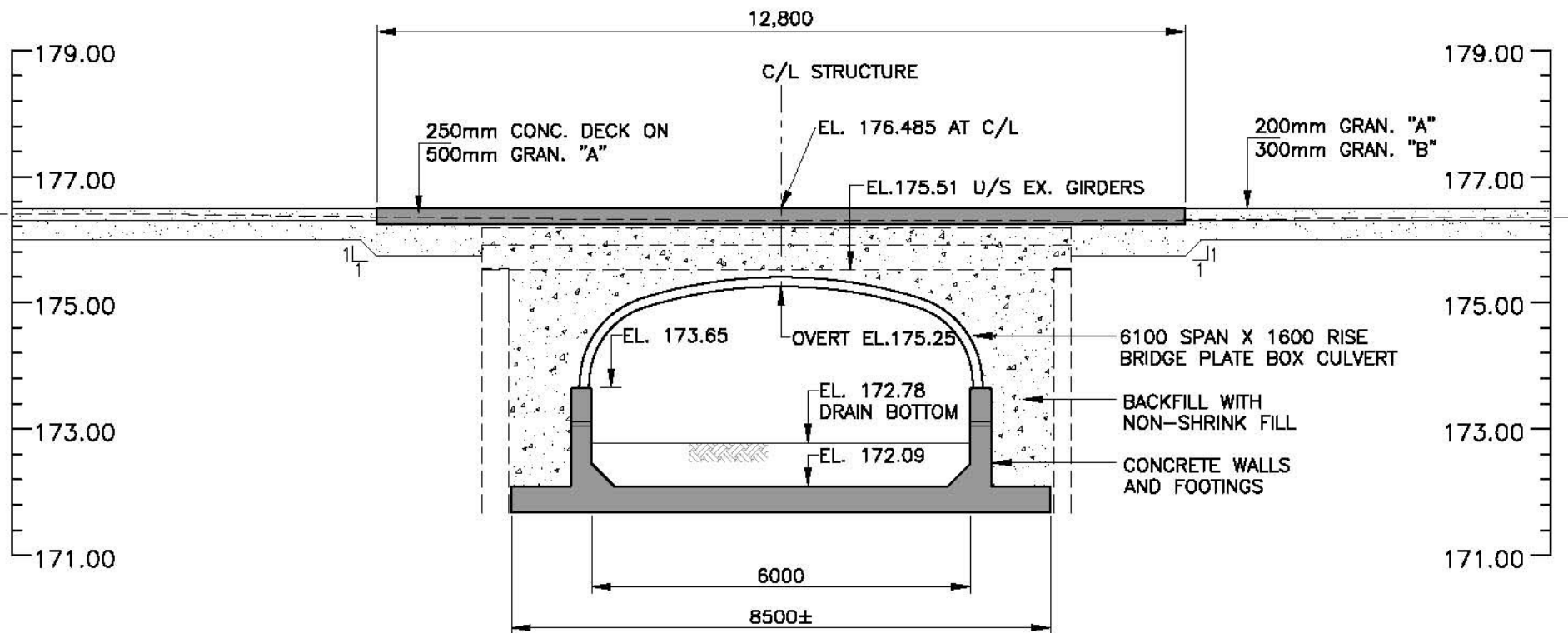


PLAN VIEW



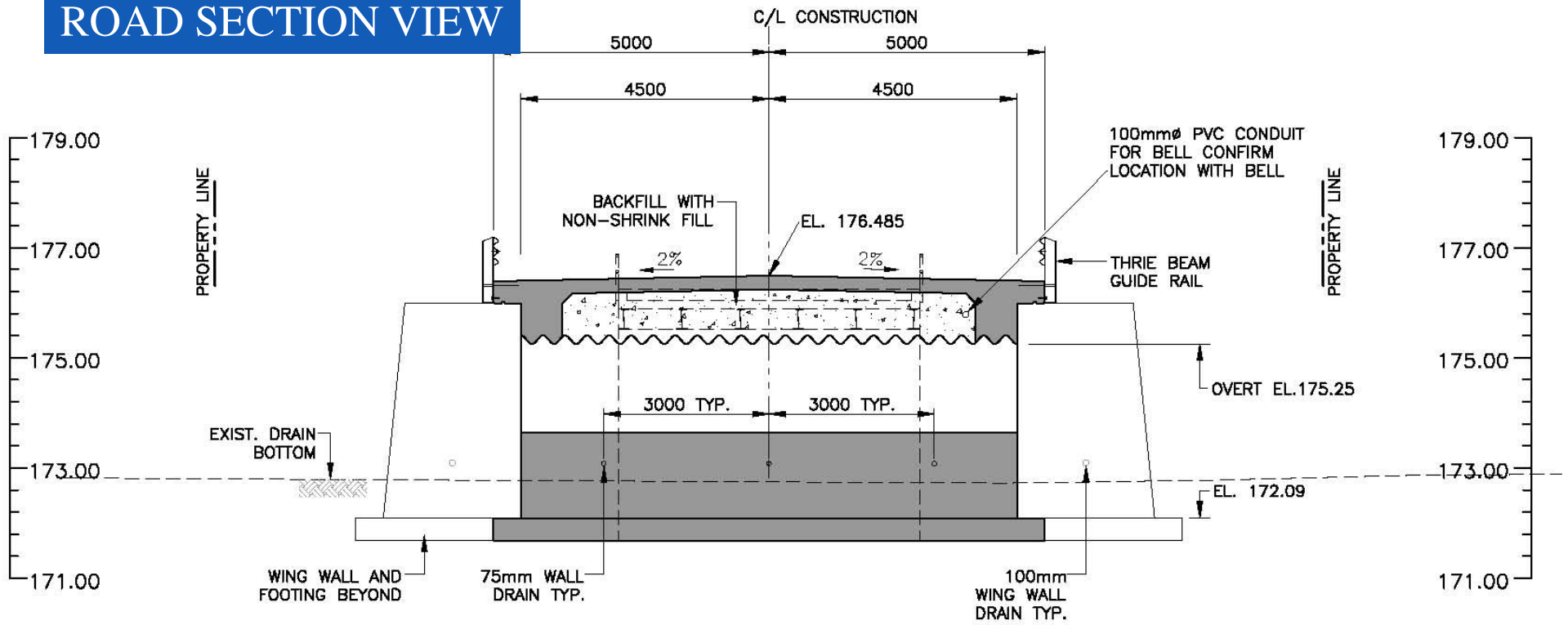


STRUCTURE SECTION VIEW





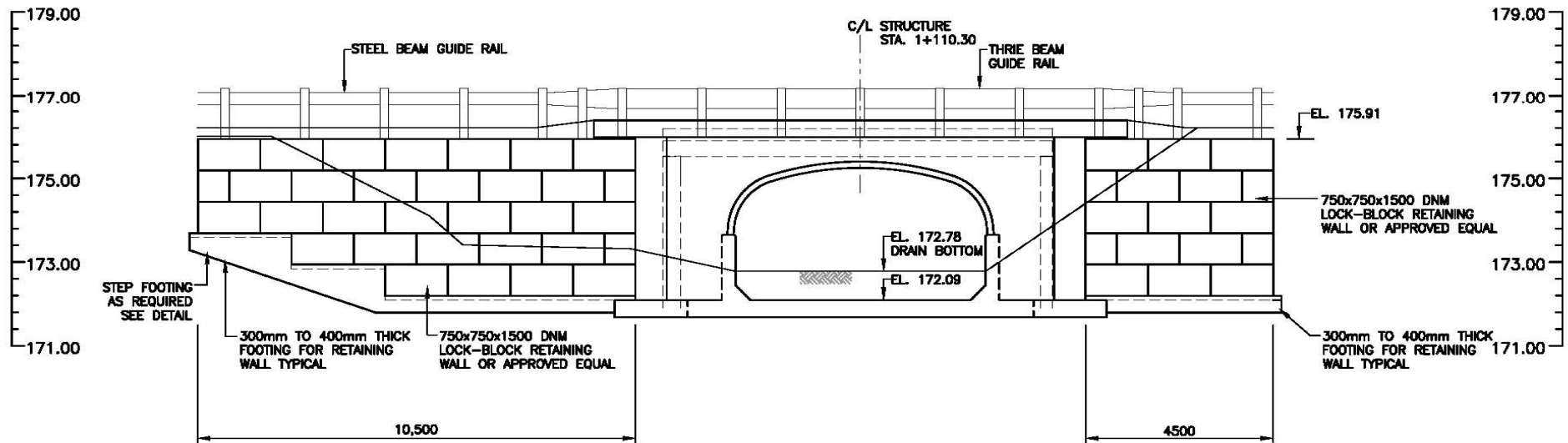
ROAD SECTION VIEW



2 SECTION
6 1:100

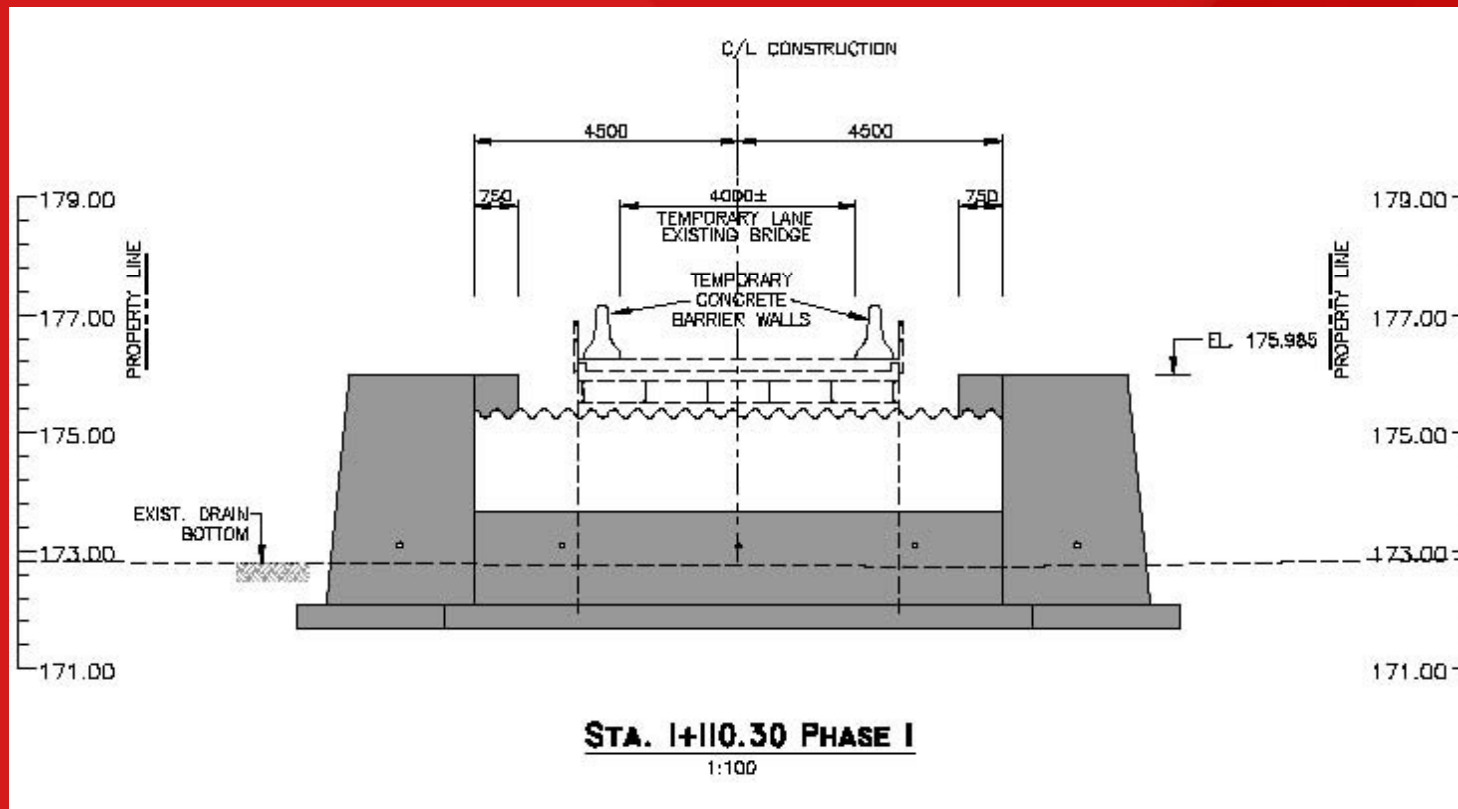


EAST ELEVATION



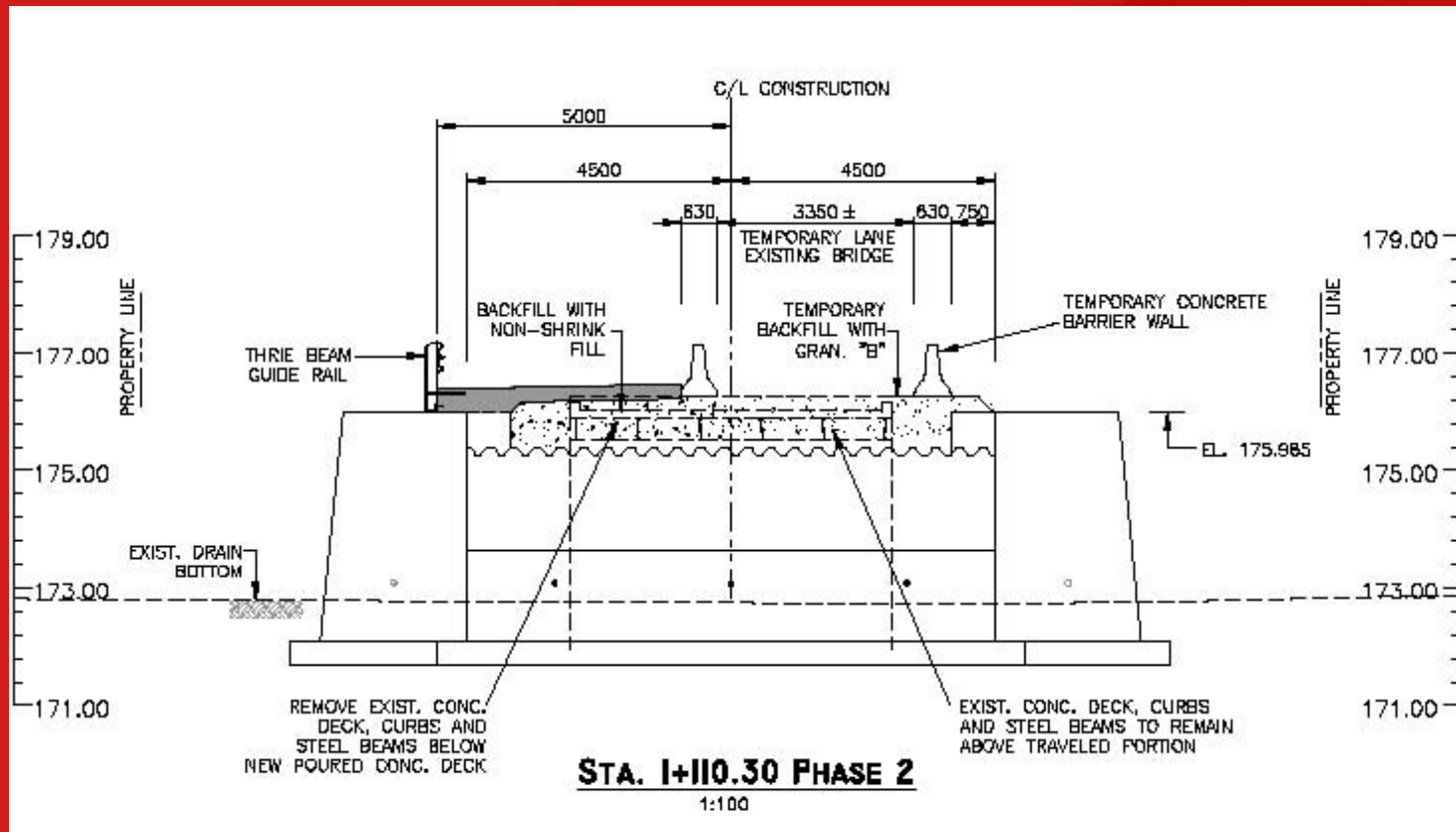


STAGING AND TRAFFIC CONTROL PHASE 1



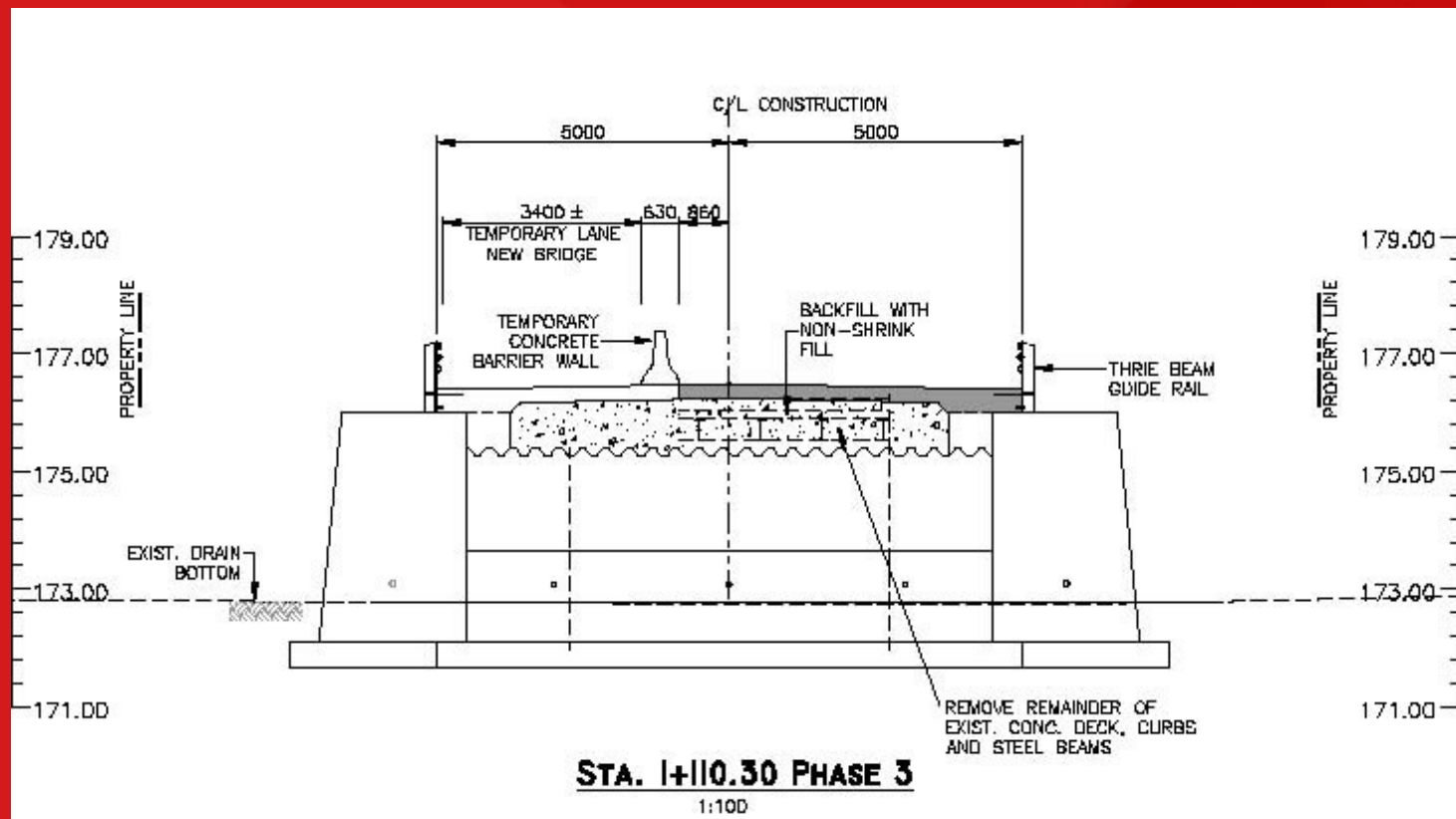


STAGING AND TRAFFIC CONTROL PHASE 2





STAGING AND TRAFFIC CONTROL PHASE 3





MUNICIPALITY OF
CHATHAM-KENT



TENTATIVE PROJECT SCHEDULE

Commencement of Construction:	July 01, 2009
Completion of Construction:	Sept. 25, 2009

These dates are pending Transport Canada Marine Approval.

RECONSTRUCTION OF SNEYE ROAD BRIDGE
OVER McDONALD TAP DRAIN



OPINION OF PROBABLE COSTS

Staging and Traffic Control on site Detour	\$ 15,700
Site and Structure Reconstruction Work	\$630,500
Contingency and Material Testing Allowance	\$ 70,000
Engineering Design and Construction Administration	\$108,000
<hr/>	
Total Project Cost (GST Not Included)	\$824,200

RECONSTRUCTION OF SNYE ROAD BRIDGE
OVER McDONALD TAP DRAIN



**MUNICIPALITY OF
CHATHAM-KENT**



THANK YOU FOR COMING

Please remember to submit your comment sheets

Contact Information:

Mr. Stephen Jahns, P.Eng.
Municipality of Chatham-Kent
315 King Street West
Chatham, Ontario
N7M 5K8
Tel: (519) 360-1998 ext. 3342
Fax: (519) 436-3240
stephenj@chatham-kent.ca

Mr. Philip Loh, P.Eng.
Dillon Consulting Limited
1400 – 130 Dufferin Avenue
London, Ontario
N6A 5R2
Tel: (519) 438-1288 ext. 1241
Fax: (519) 672-8209
ploh@dillon.ca

Mr. Will Bokma, P.Eng.
Dillon Consulting Limited
202 King Street West
Suite 300
Chatham, Ontario
N7M 1E5
Tel: (519) 354-7802 ext. 3304
Fax: (519) 6354-2050
wbokma@dillon.ca



MUNICIPALITY OF
CHATHAM-KENT



QUESTIONS

AND

ANSWERS



**MUNICIPALITY OF
CHATHAM-KENT**



THANK YOU FOR COMING

Please remember to submit your comment sheets

Contact Information:

Mr. Stephen Jahns, P.Eng.
Municipality of Chatham-Kent
315 King Street West
Chatham, Ontario
N7M 5K8
Tel: (519) 360-1998 ext. 3342
Fax: (519) 436-3240
stephenj@chatham-kent.ca

Mr. Philip Loh, P.Eng.
Dillon Consulting Limited
1400 – 130 Dufferin Avenue
London, Ontario
N6A 5R2
Tel: (519) 438-1288 ext. 1241
Fax: (519) 672-8209
ploh@dillon.ca

Mr. Will Bokma, P.Eng.
Dillon Consulting Limited
202 King Street West
Suite 300
Chatham, Ontario
N7M 1E5
Tel: (519) 354-7802 ext. 3304
Fax: (519) 6354-2050
wbokma@dillon.ca